



CHRYSLER

18/02/2014

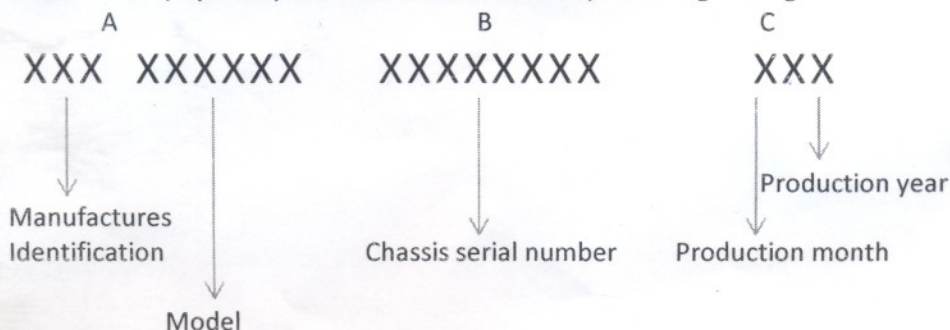
The Transport Commissioner  
Motor Vehicles Department  
Thiruvananthapuram

Sub: 2014 Model Year Registration – Chassis Number Nomenclature for FIAT Cars.

Dear Sir,

Please find below the nomenclature of the chassis numbers for the FIAT passenger car range with all their Models & Variants (Grande Punto & Linea)

The Chassis number consists of 20 characters (3 barrels) as given below – we request you to consider this (especially the characters of barrel C) while registering 2014 vehicles.



Barrel C (last two characters)	Production Year
For 2014	J Z

Barrel C (First Character)	Production Month
Month Codes	
January	A
February	B
March	C
April	D
May	E
June	F

Barrel C (First Character)	Production Month
Month Codes	
July	G
August	H
September	J
October	K
November	L
December	M

For FIAT GROUP AUTOMOBILES

SAJITH JACOB

Senior Manager – Sales & Network Development

Encl. NO. ~~5553~~ C3 / 5553/TC/2014 dtd 1/3/14

COPY Forwarded to all DTCS, RTOS, and JRTOS, for information and necessary action please note that the 19<sup>th</sup> and 20<sup>th</sup> digits in the Chassis numbers ~~555~~ "J & Z" denotes the manufacturing Year 2014.